



<http://worldmap.harvard.edu/alpha>

a framework to support
collaborative research

WorldMap Vision

- A very general purpose platform designed to make it easier for researchers at Harvard and elsewhere to share, visualize, (eventually analyze), and publish geospatial data.

Why GeoNode?

- Includes many built-in features that were needed in WorldMap:
 - User registration/login system
 - Upload/download geospatial data
 - Control access to data
 - Map creation and editing tools
- Open source

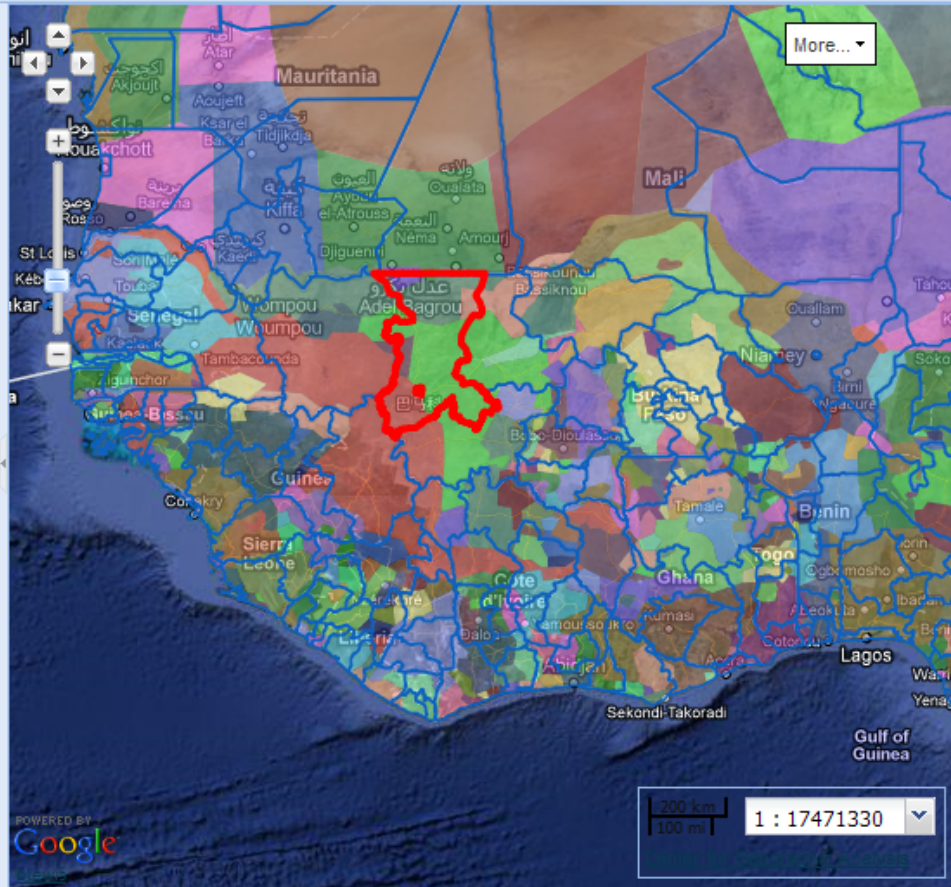
WorldMap Features

- The following features have been built on top of GeoNode
 - Import uploaded shapefiles into PostGIS
 - Search layers and highlight matches on the map
 - Identify features on a map and display their attributes (with layer owner control over the ordering and titles of attributes)
 - Optionally use unique url suffixes instead of numbers in map urls:
 - http://worldmap.harvard.edu/alpha/maps/my_awesome_map
 - Display layers in a tree, grouped by category. Allow users to rename, move, add, and delete categories & layers in the layer tree.
 - Upload layers and change map permission settings directly from the map composer page.
 - Snapshot tool - create a URL linked to a specific map configuration, so the URL will always display the same map view even if the original map is changed (unless layers are deleted).

Add Layers Save Link Print About Jump to...

Share Map Help

- Data Legend
- Map Layers
 - Base Mapping
 - Economic
 - Environmental
 - Ethno and Linguistic
 - Language Families 2001 Felix
 - 2008 Global Administrative Units - Admin
 - Ethnicity 2001 Felix
 - 1924 Ethnographic Survey of Africa
 - 2001 Language Families - Felix
 - Harvard Collections
 - Health
 - Historic Maps 1600 to 1800
 - Historic Maps 1800 to 1950
 - Political and Population
 - 2008 Global Administrative Units - (
 - 2006 Population Density - LANDSC
- Background
 - Google Satellite
 - Google Hybrid
 - Google Roadmap
 - Google Terrain
 - OpenStreetMap



Search Results

Name
2008 Global Administrative Units - Admin
20.986109194817
Ethnicity 2001 Felix
BAMBARA
MALINKE

Feature Details

PERIMETER	20.9861091
LAST_UPDAT	20050415
EXP_YEAR1	0
STR_YEAR1	0
AREA	7.60435396
STR_YEAR0	0
REGION	Western
Africa	
ADMO_NAME	Mali
EXP_YEAR0	0

Enter search... Search Reset

some next steps

- Scaling
 - Handle multiple concurrent uploads
 - Tile creation & rendering
 - Layer Search

some next steps

- Collaboration

- Ability for users to chat and/or send messages to each other
- Ability for users to see list of all Maps their Layers are in, and all Layers or Maps they have edit access to (not just ownership of).
- Additional security setting: allow users to view but not download data
- Synchronized screens between users, screencast to multiple viewers
- Ranking system for layers and maps based on user input (Like button?)
- User annotation for maps and layers

some next steps

- Usability

- Gazetteer: place-name search (perhaps using geonames API)
- Improved layer search: filter by category, time range, author, etc
- Continue to minimize the need to leave map page: view/edit layer info and user profiles within floating windows on the map page.
- More powerful styling tools (autogenerate choropleths, color ramps)
- Upload multiple SLD's for the same layer
- Undo function when editing map
- Google street view integration
- Support for mobile devices
- Edit layer features & attributes
- Display time series; animated changes over time on map

Some next steps

- Data Input/output
 - Support more upload formats: KML, CSV files.
 - Store remote WMS layers and GeoRSS feeds as GeoNode layers
 - Basic tool for point/line/poly layer creation
 - Support time handling in KML uploads, downloads

thank you

Contact Ben Lewis for more information:
blewis@cga.harvard.edu